

<u>FUNDS</u>	<u>FUND</u>	<u>ESTIMATED RESOURCES</u>
Government Fund Types		
General	001	18,075,070.42
Emergency	016	1,133,051.27
Principals' Funds	018	44,127.76
Total General Fund		<u>19,252,249.45</u>
Debt Service		
Bond Retirement	002	790,818.88
Total Debt Service		<u>790,818.88</u>
Capital Projects		
Permanent Improvement	003	140,265.11
Total Capital Projects		<u>140,265.11</u>
Special Revenue		
Trust Fund	007	9,255.00
Local Grants	019	26,097.00
Classroom Facilities - Maintenance	034	69,200.00
Athletics	300	166,353.26
OneNet	451	5,400.00
State Grants	499	0.00
Race To The Top	506	0.00
Title VI B	516	336,977.95
Title I	572	540,751.04
Title VI-B Preschool	587	2,827.38
Title II-A	590	95,627.71
Medicaid	599	0.00
Total Special Revenue		<u>1,252,489.34</u>
Total Government		21,435,822.78
Proprietary Fund Types - Enterprise		
Food Service	006	904,864.54
Uniform School Supplies	009	0.00
Latchkey	020	18,350.00
Total Enterprise		<u>923,214.54</u>
District Agency	022	73,533.23
Student Activities	200	131,713.00
Total Fiduciary		<u>205,246.23</u>
Total FY 17 Estimated Resources		22,564,283.55

<u>FUNDS</u>	<u>FUND</u>	<u>Appropriations</u>
Government Fund Types		
General	001	13,998,061.64
Emergency	016	1,133,051.27
Principals' Funds	018	44,127.76
Total General Fund		<u>15,175,240.67</u>
Debt Service		
Bond Retirement	002	478,276.62
Total Debt Service		<u>478,276.62</u>
Capital Projects		
Permanent Improvement	003	98,072.89
Total Capital Projects		<u>98,072.89</u>
Special Revenue		
Trust Fund	007	9,255.00
Local Grants	019	26,097.00
Classroom Facilities - Maintenance	034	69,200.00
Athletics	300	166,353.26
OneNet	451	5,400.00
State Grants	499	0.00
Race To The Top	506	0.00
Title VI B	516	336,977.95
Title I	572	540,751.04
Title VI-B Preschool	587	2,827.38
Title II-A	590	95,627.71
Miscellaneous Federal Grants	599	0.00
Total Special Revenue		<u>1,252,489.34</u>
Total Government		17,004,079.52
Proprietary Fund Types - Enterprise		
Food Service	006	904,864.54
Uniform School Supplies	009	0
Latchkey	020	18,350.00
Total Enterprise		<u>923,214.54</u>
District Agency	022	73,533.23
Student Activities	200	131,713.00
Total Fiduciary		205,246.23
Total FY 17 Appropriations		18,132,540.29

LORAIN COUNTY GENERAL HEALTH DISTRICT
CONTRACT

This agreement is effective from August 1, 2017 to June 30, 2020 between the Lorain County General Health District (LCGHD) and the Clearview Local School District. The parties agree as follows:

1. LCGHD agrees to provide a Registered Nurse who shall hold an active Ohio Registered Nursing License.
2. The assigned nursing staff shall work the schedule of the contracted district and may flex the weekly time requirements to fulfill obligations as requested by the school district or LCGHD. Any time requirement flexing shall be approved by the nurse's supervisor.
3. The LCGHD and its employees will at all times be acting as independent contractors, and not as employees of the school district. Therefore the assigned nursing staff will provide, in agreement with the school district, duties pertinent to school health and wellness services consistent with the duties of the contracted position, as outlined in Exhibit A which is attached and incorporated herein by reference. Any administrative duties related to the staff of the school shall be addressed by the school district.
4. The school district shall provide appropriate work space for the LCGHD staff, along with secure computer and printer access to enable the provision of school health nursing and maintenance of school medical records in accordance with HIPAA and FERPA.
5. LCGHD shall maintain adequate liability insurance to cover the performance of the duties of the assigned nursing staff. The school district agrees to hold harmless the LCGHD from any and all claims of liability for injury or damages to the children and third parties arising from the actions of school staff.
6. LCGHD shall provide orientation, supervision and continuing education pertinent to school nursing, as determined by the health district and Ohio Board of Nursing. There may also be training dates as required by the LCGHD (up to 4 per school calendar year) for which the LCGHD staff will not be available for the school district.
7. LCGHD shall provide school nursing services as follows: 40 RN/hrs. per week @ \$50.00 per hour. The Clearview Local School District shall pay a total of \$72,000.00, for each school year in 2017-18, 2018-19, 2019-20. Payments to be made in 10 monthly installments of \$7,200.00, September through June of each school year. Payments are due on or by the 15th day of each month.
8. This contract may be terminated by either party by the terminating party delivering written notice of the termination 60 days before the termination is to take effect.



David Covell, RS, MPH, Health Commissioner
Lorain County General Health District
9880 S Murray Ridge Rd
Elyria, OH 44035

2/13/17
Date

Jerome Davis, Superintendent
Clearview Local School District
4700 Broadway Ave.
Lorain, OH 44052

Date

Exhibit A: Lorain County General Health District Contract Agreement for the 2017-2020 School Years

NURSING IN THE SCHOOL SETTING-LORAIN COUNTY GENERAL HEALTH DISTRICT

SERVICE	SUPERVISOR- RN	RN	LPN
HEALTH SERVICES	<ul style="list-style-type: none"> • <i>Coordinates health services program</i> • <i>Leadership for health initiatives</i> • <i>Health services policies and procedures</i> • <i>Budget</i> • <i>Coordinate staffing needs with school administration</i> • <i>Coordinate substitute nurse staffing</i> • <i>Follows HIPAA, FERPA rules and regulations</i> 	<ul style="list-style-type: none"> • <i>Coordinates the health service delivery including students with special needs and chronic illnesses – mandated member of IEP/IFSP team</i> • <i>Provides direct and indirect nursing care independently</i> • <i>Delegation and training of unlicensed personnel (aides) where safe and appropriate delegation is applicable as determined by the RN; supervises LPN</i> • <i>Screenings, referrals, assist families with resources- familiar with community resources for health care services; follow up on referrals – collaborate with staff for child's needs</i> • <i>Data collection, evaluation and planning</i> • <i>Follows HIPAA, FERPA rules and regulations</i> 	<ul style="list-style-type: none"> • <i>Provides direct nursing care under the direction of an RN including illness, injury assessment, basic first aid, and chronic disease maintenance</i> • <i>Screening duties as assigned by RN; documentation on students file</i> • <i>Assist with monitoring, reporting and documenting</i> • <i>Administers medications as per licensure</i> • <i>Follows HIPAA, FERPA rules and regulations</i>
HEALTH ED	<ul style="list-style-type: none"> • <i>Coordinates and monitors health information used by nursing staff</i> • <i>Collaboration with health promotion department for health education needs</i> 	<ul style="list-style-type: none"> • <i>Provides appropriate health information and instruction to students and staff</i> • <i>Promotes health and wellness for improved school performance; active member of health advisory</i> 	<ul style="list-style-type: none"> • <i>Provides appropriate health information and instruction to students and staff as directed by RN</i> • <i>Prevention of disease – student education during</i>

	<ul style="list-style-type: none"> • <i>Direct assistance to nursing staff for decision making</i> • <i>Coalition team member</i> • <i>Collaboration with school administration for wellness initiatives</i> 	<p><i>councils/committees and wellness teams</i></p> <ul style="list-style-type: none"> • <i>Disease prevention (immunizations, communicable illness)</i> • <i>Interprets Centers for Disease Control (CDC) guidelines for best practice</i> • <i>Data collection, evaluation and planning</i> 	<p><i>direct care</i></p>
ENVIRONMENT	<ul style="list-style-type: none"> • <i>Liaison between environmental health staff and nursing</i> • <i>Direct assistance to nursing staff for case management and planning</i> • <i>Analyze data for initiatives</i> 	<ul style="list-style-type: none"> • <i>Identifies physical, emotional and safety concerns, makes appropriate referrals</i> • <i>Promotes a safe and nurturing environment, promotes injury prevention</i> • <i>Provides training in Standard Precautions and Blood Borne Pathogens</i> • <i>Active member of crisis prevention teams</i> • <i>Analyze injury reports/data – used for injury reduction initiatives</i> 	<ul style="list-style-type: none"> • <i>General knowledge regarding student safety</i> • <i>Provides basic environmental safety for students</i> • <i>Trained for triage during crisis events</i>
NUTRITION	<ul style="list-style-type: none"> • <i>Staff education regarding initiatives and grant opportunities available</i> • <i>Resources for nursing staff</i> • <i>Analysis of data</i> 	<ul style="list-style-type: none"> • <i>Collaborates with school food service programs; nutrition knowledge base</i> • <i>Instruction and promotion of the health benefits of healthy food choices</i> • <i>Collaborative implementation of healthy food initiatives</i> • <i>Referrals and follow up to</i> 	<ul style="list-style-type: none"> • <i>Encourage students and staff toward healthy food choices</i>

		<ul style="list-style-type: none"> - <i>community/medical providers</i> 	
PE/ACTIVITY	<ul style="list-style-type: none"> • <i>Staff education regarding initiatives and grant opportunities available</i> • <i>Resources for nursing staff</i> • <i>Analysis of data</i> 	<ul style="list-style-type: none"> • <i>Promotes healthy activities including PE; safe sports practices; lifelong active life style</i> • <i>Knowledge base for prevention of chronic disease</i> • <i>Coordinate with staff in obtaining BMI data</i> • <i>Referrals and follow up to community/medical providers</i> 	<ul style="list-style-type: none"> • <i>Encourage students and staff toward active lifestyle</i>
MENTAL HEALTH	<ul style="list-style-type: none"> • <i>Collaboration with community agencies</i> • <i>Provide nursing staff education opportunities</i> • <i>Analysis of data</i> 	<ul style="list-style-type: none"> • <i>Provides health counseling within scope of practice; referrals for interventions</i> • <i>Actively collaborates with mental health staff (when available) for medication management, counseling services and behavioral plans</i> • <i>Collaboration and promotion for educational opportunities for students and staff as available</i> 	<ul style="list-style-type: none"> • <i>Report student concerns to RN or school administration</i>

<p>FAMILY/COMMUNITY</p>	<ul style="list-style-type: none"> • <i>Promotion of community partnerships</i> • <i>Provide staff with necessary resources for delivery of services to families</i> 	<ul style="list-style-type: none"> • <i>Promotes family and community participation</i> • <i>Influential in securing appropriate services, referrals and/or follow up</i> • <i>Liaison to families, community partners</i> • <i>Active member of health advisory committees, drawing on public health expertise</i> 	<ul style="list-style-type: none"> • <i>Encourage family and community participation</i> • <i>Provide known services/resources for follow up under direction of RN</i>
<p>STAFF WELLNESS</p>	<ul style="list-style-type: none"> • <i>Assist nursing staff with resources</i> • <i>Coordination of collaborative efforts</i> • <i>Data analysis and planning initiatives</i> 	<ul style="list-style-type: none"> • <i>Coordinate and implement health screenings and appropriate health education</i> • <i>Interpret screening results and data, evaluation for planning</i> • <i>Counseling and referral</i> • <i>Active role in development of healthy activities and environment</i> • <i>Collaborative role on wellness committee</i> 	<ul style="list-style-type: none"> • <i>Assist RN in obtaining heights, weights, BMI and blood pressures</i> • <i>Refer staff to medical provider for abnormal results</i>

EDUCATIONAL SERVICE CENTER OF LORAIN COUNTY

**2017 – 2018
County Service Agreement**

CLEARVIEW LOCAL SCHOOL DISTRICT

The Clearview Local School District agrees to legislated (O.R.C. 3313.843 and 3313.845) per pupil deductions from their foundation payments computed by the Ohio Department of Education for services provided by the Lorain County Educational Service Center, should these deductions be allowed in Fiscal Year 2018. Furthermore, the Lorain County Educational Service Center agrees to credit the Clearview Local School District 100% of the \$6.50 per pupil deductions from the State Foundation for the cost of selected services in this agreement.

**2016-2017 DATA
Clearview Local School District Student Count -1573
Local Deduction to ESC- \$10,224.50**

I. SPECIALIZED DISTRICT SERVICES

The amount given is an estimated amount for fiscal year 2018. Total expenditures are defined as the total amount expended during the 2017-18 school year in connection with these services plus a 4% fiscal fee. Bills for such services will be on a monthly basis with the final month to be billed in July/August 2018 with an adjusted (plus or minus) amount due based on total expenditures.

A. _____

II. UNIVERSAL SERVICES

Billing for Universal Services will be on a monthly basis with the final month to be billed in July/August 2018 with an adjusted (plus or minus) amount based on total expenditures.

Total expenditures are defined as the total amount expended during the 2017-18 school year in connection with these services plus a 4% fiscal fee. Estimated costs for FY18 will be based on total number of participating districts and will be submitted in writing to the participating districts by August 2017.

A. <u>X</u>	Participation in Speech and Language Supervisory Services
B. <u>X</u>	Audiological Services
C. <u>X</u>	Behavioral Specialist Support Services
D. <u>X</u>	Gifted/Talented Supervisory Service
E. _____	Parent Mentor Services
F. <u>X</u>	Attendance Officer
G. _____	Transition Coordinator
H. <u>X</u>	Occupational Therapist (3 days)
I. _____	Marketing Specialist
J. _____	Physical Therapist
K. <u>X</u>	Vision Impaired Specialist (NEW)

III. Speech Language Pathologist for JVS Students - \$62.00 per hour

Billing for Speech Language Pathologists will be invoiced quarterly at \$62 per hour for services given to students attending the Lorain County JVS. Depending on caseload size in any given year, the SLP may or may not have time to provide 3 year re-evaluations for students who are not on the SLP's caseload. District will be billed for evaluation, report writing and attendance at meetings if the JVS SLP is involved. If an initial evaluation is requested by a participating district we reserve the

right to request they send their district SLP to conduct the testing/evaluation *unless* JVS SLP has available time and a manageable caseload. If JVS SLP provides testing, etc, the district will be billed extra.

 District agrees to participate in the Speech Language Pathologist for JVS Students Program.

IV. LORAIN COUNTY ACADEMY PROGRAMS

Billing for the Lorain County Academy Program is invoiced at the beginning of the first semester and again at the beginning of the second semester. If no slots are selected on this contract and then requested later in the year, a 20% surcharge will apply. There will also be an additional 20% fee charged for any student placed at the Academy that is currently on an Individualized Education Program (I.E.P.) Any costs not covered by the per space fee will be billed proportionately per placement to each participating district. Slots selected, if available, after the beginning of the second semester, will be billed one half of the full tuition cost. No new enrollment will be permitted after the start of the fourth quarter. The district also agrees to accept the grades issued by the Lorain county Academy Program.

- A. Grades 6th, 7th, 8th and 9th \$11,500 per slot
 1 Number of slots purchased

- B. Lorain County Academy Suspension Program - \$5,900 for two (2) slots. Slots selected, if available, after the beginning of the second semester will be billed one half of the full tuition cost.
 Number of slots purchased

V. CONSORTIUM PRESCHOOL EDUCATION PROGRAM.

All preschool education costs, including a 4% fiscal fee, shall be apportioned on a per pupil/per day participation basis and billed on a monthly basis for September thru June, with the following exceptions:

- 1. Due process hearing costs will be paid by the district for which the hearing is conducted, including but not limited to legal fees.
- 2. Special needs equipment that is purchased specifically for a student within one district shall be reimbursed by that district.
- 3. Special needs equipment that is purchased specifically for a student within one district, but at some future time may be used by others, shall be reimbursed on a per pupil basis up to a maximum of \$300.
- 4. Transportation costs (busing, payment in lieu of, etc.) of preschool students to a site-based program shall be borne by the local school district.
- 5. Costs associated with services provided to a preschool student above State Minimum standards shall be borne by local school district, unless agreed to by the Educational Service Center of Lorain County.

 X District agrees to participate in the Consortium Preschool Education Program.

VI. NORTHERN OHIO RESEARCH & TRAINING HUB (NORT'H)

Fees are paid annually based on the fee schedule below to the Educational Service Center of Lorain County.

1-2 School Buildings - \$9,222	4 School Buildings - \$15,360	6 School Buildings - \$16,952
3 School Buildings - \$12,292	5 School Buildings - \$15,360	each add't building - \$1,500

 District agrees to participate and to receive this service

VII. NORT'H Video On Demand Project

Billing for these services will be on an annual basis. NOTE: Each building is required to have a

home access license if teachers wish to access the videos from home. Based on services currently provided to district the fee for next year's service will be \$.

_____ District agrees to participate and to receive this service

IN CONSIDERATION OF THE PROGRAMS AND SERVICES designated herein to be provided by the Educational Service Center of Lorain County, the Board of Education of the Clearview Local School District agrees to pay the Educational Service Center of Lorain County for the programs and services requested in accordance with the descriptions above and Sections 1,2,3,4 and 5 below:

Section 1. In consideration for the services and programs contracted for above, the Board of Education of the Clearview Local School District also agrees to pay any excess costs associated with any program or service in which it has elected to participate as indicated above in the contractual agreement, such costs to be calculated on a pro-rata basis among participating districts. Notice of such excess costs will be provided to the Board of Education of the Clearview Local School District by the Educational Service Center of Lorain County.

Section 2. The Educational Service Center of Lorain County reserves the right to cancel any one or all of the services and programs listed in Sections I thru VII of this Agreement if an insufficient number of districts elect to participate in a particular program or if there is a discontinuation or reduction of funds. Notice of such cancellation will be provided to the Board of Education of the Clearview Local School District by the Educational Service Center of Lorain County.

Section 3. In consideration of the services and programs contracted for above, the Board of Education of the Clearview Local School District agrees to pay for any programs or services in which it has elected to participate the pro-rata share of any unemployment benefits which may become payable due to cancellation of any services or programs pursuant to Section 2 of this Agreement.

Section 4. The Board of Education of the Clearview Local School District, in consideration of the agreement of the Educational Service Center of Lorain County to provide the services and programs contracted for above, agrees to provide written notice of its desire to withdraw from participation in any one or more of the programs and services contracted for above to the Educational Service Center of Lorain County. Such withdrawal notice, if received by the Educational Service Center of Lorain County, shall operate to eliminate for the succeeding school year, all contractual obligation of the parties with respect to the programs or services which are included in the notice of withdrawal.

Section 5. All bills and statements for the programs and services contracted herein by the Board of Education of the Clearview Local School District shall be due and payable not more than thirty (30) days from the date of mailing of the bill or statement by the Educational Service Center of Lorain County.

Clearview Local School District:

Educational Service Center of Lorain County:

(Board President)

(Governing Board President)

(Treasurer)

(Treasurer)

(Superintendent)

(Superintendent)

Date: _____

Date: _____

File: IGAE

HEALTH EDUCATION

The Board is committed to a sound, comprehensive health education program as an integral part of each student's general education. At a minimum, the health education program meets the requirements established by State law and includes instruction in nutrition; drugs, alcohol and tobacco; venereal disease; personal safety and assault prevention (grades K-6); dating violence prevention (grades 7-12); prescription opioid abuse prevention, and anatomical gifts.

The Board believes that the greatest opportunity for effective health education lies with the public schools because of the opportunity to reach almost all students at an age when positive, lifelong health, wellness and safety habits may be instilled.

The health education program emphasizes a contemporary approach to the presentation of health, wellness and safety information, skills and knowledge necessary for students to understand the functioning and proper care of the human body and tools for recognizing the characteristics of healthy relationships and the warning signs of dating violence.

In an effort to promote a relevant approach to the instruction of health education, the Board continues to stress the need for curricular, personnel and financial commitments to ensure a health education program of high quality in the public schools.

Per ORC 3313.602, beginning with the 2017-2018 school year, each school district which offers grades nine to twelve shall provide instruction in cardiopulmonary resuscitation and the use of an automated external defibrillator. Instruction shall include the psychomotor skills necessary to perform cardiopulmonary resuscitation and use an automated external defibrillator. "Psychomotor skills" means the use of hands-on practice to support cognitive learning.

NOTE: According to State law, the study of health education must include instruction in:

- 1. the nutritive value of foods, including natural and organically produced foods, the relation of nutrition to health and the use and effects of food additives;*
- 2. the harmful effects of and legal restrictions against the use of drugs of abuse, alcoholic beverages and tobacco;*
- 3. venereal disease education (students may be excused from this instruction with a written request by parents);*
- 4. personal safety and assault prevention for students in kindergarten through grade six (students may be excused from this instruction with a written request by parents);*
- 5. age-appropriate instruction in dating violence prevention for students in grades 7 through 12 that must include recognizing the warning signs of dating violence and the characteristics of healthy relationships;*
- 6. prescription opioid abuse prevention, with an emphasis on the prescription drug epidemic and the connection between prescription opioid abuse and addiction to other drugs, such as heroin-and*
- 7. the process of making an anatomical gift, with an emphasis on the life-saving and life-enhancing effects of organ and tissue donation.*

In addition, upon written request to the building principal and within a reasonable amount of time, a parent of a student under 18 years old may examine the school's dating prevention materials at the school.

[Adoption date: August 19, 1991]

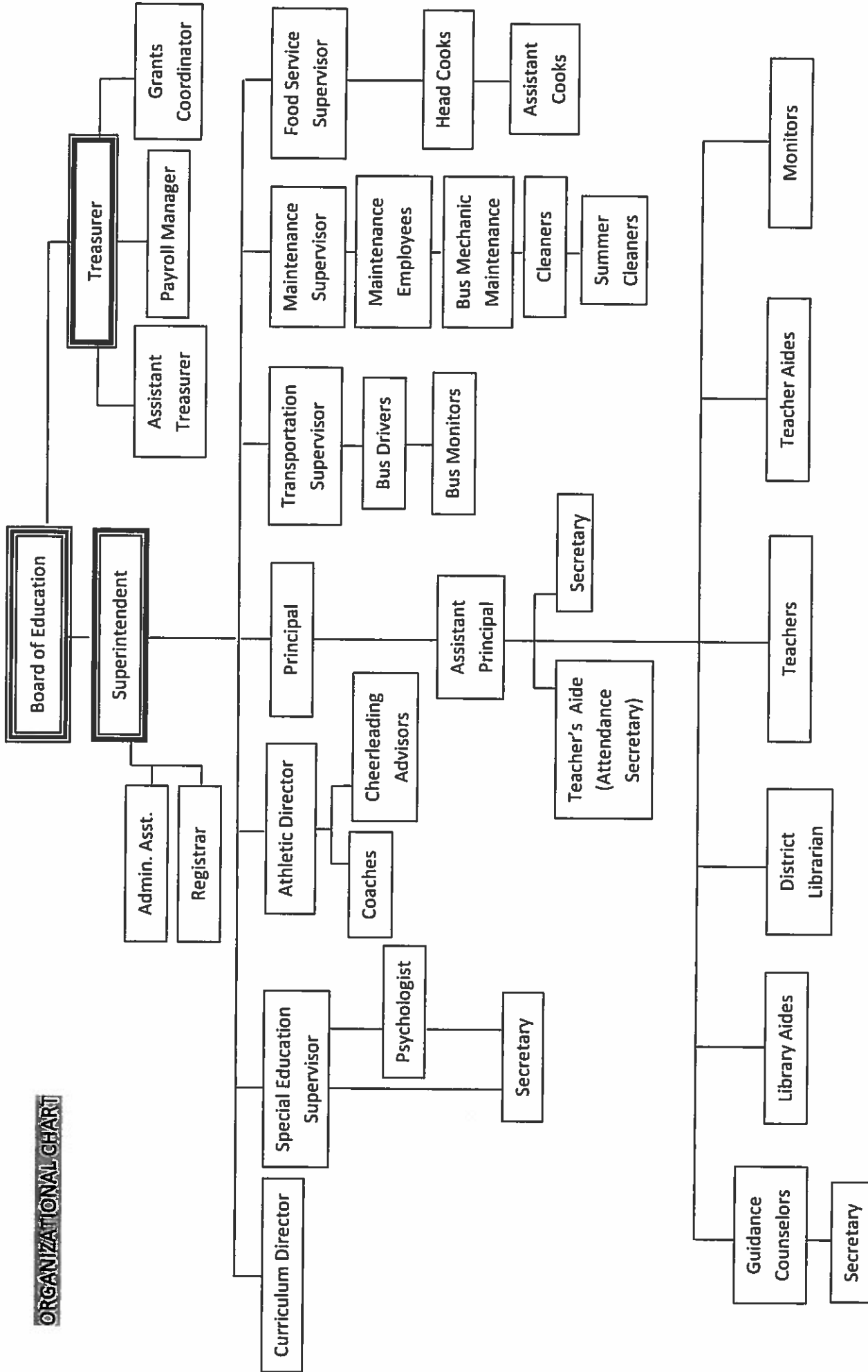
[Re-adoption date: March 19, 2001]

[Re-adoption date: October 18, 2004]

[Re-adoption date: October 10, 2011]

LEGAL REFS.: ORC 3313.60; 3313.666
3319.073
OAC 3301-35-04; 3301-35-06

CROSS REFS.: EB, Safety Program
EBC, Emergency Management and Safety Plans
EFG, Student Wellness Program
IGAF, Physical Education
IGAG, Drugs, Alcohol and Tobacco Education
IGAH, Family Life Education
IGAI, Sex Education
JFC, Student Conduct (Zero Tolerance)
JFCF, Hazing and Bullying (Harassment, Intimidation and Dating Violence)
JHF, Student Safety
JHG, Reporting Child Abuse



[Adoption date: March 19, 2001]
 [Re-adoption date: October 18, 2004]
 [Re-adoption date: October, 10, 2011]